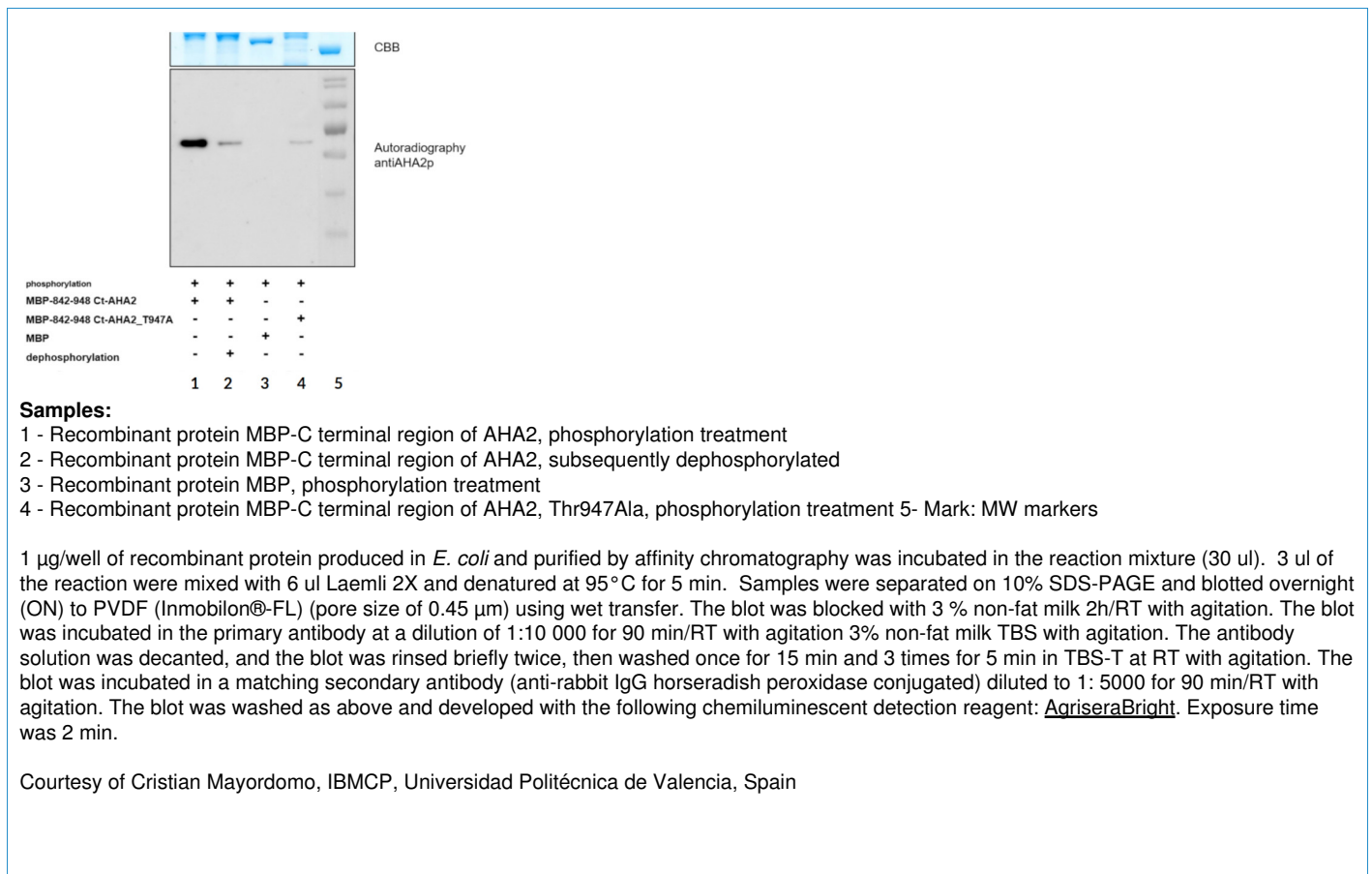


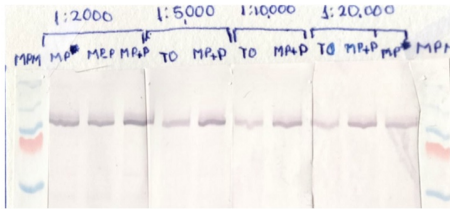
Product no **AS22 4789****AHA2 p | ATPase 2 phosphorylated, plasma membrane-type****Product information**

<b>Immunogen</b>	KLH-conjugated peptide derived from <i>Arabidopsis thaliana</i> AHA2 protein sequence UniProt: <a href="#">P19456</a> , TAIR: <a href="#">At4g30190</a>
<b>Host</b>	Rabbit
<b>Clonality</b>	Polyclonal
<b>Purity</b>	Antigen affinity purified serum, in PBS pH 7.4
<b>Format</b>	Lyophilized
<b>Quantity</b>	50 µg
<b>Reconstitution</b>	For reconstitution, add 50 µl, of sterile or deionized water.
<b>Storage</b>	Store lyophilized/reconstituted at -20°C; once reconstituted make aliquots to avoid repeated freeze-thaw cycles. Please, remember to spin tubes briefly prior to opening them to avoid any losses that might occur from lyophilized material adhering to the cap or sides of the tubes.

**Application information**

<b>Recommended dilution</b>	1 : 10 000 (WB)
<b>Expected   apparent MW</b>	104,4   kDa
<b>Confirmed reactivity</b>	<i>Amaranthus cruentus</i> , <i>Arabidopsis thaliana</i> , <i>Beta vulgaris</i>
<b>Predicted reactivity</b>	<i>Brassica oleracea</i> , <i>Camelina sativa</i> , <i>Capsella rubella</i> , <i>Eutrema salsugineum</i> , <i>Raphanus sativus</i> Species of your interest not listed? <a href="#">Contact us</a>
<b>Not reactive in</b>	No confirmed exceptions from predicted reactivity are currently known
<b>Selected references</b>	To be added when available, antibody available in October 2023.





Titration of the AS22 4789: AHA2 p | ATPase 2 phosphorylated, plasma membrane-type antibody. Ten  $\mu\text{g}$  of protein from Amaranth stem mixed membranes (TO), or from beetroot plasma membranes either pre-phosphorylated, i.e. treated with ATP (MP+P), or not (MP\* and MP-P) were blotted and probed with the indicated dilutions of antibody. Molecular mass markers (MPM) have, from top to bottom 250, 130, 100, 70 (red) and 55 kDa, respectively.

Courtesy Dr. Luis González, CINVESTAV, Mexico