

Product no **AS08 325****ARF1 | ADP-ribosylation factor 1****Product information**

<b>Immunogen</b>	Recombinant GST fusion of full length of <i>Arabidopsis thaliana</i> ARF1 ( <a href="#">P36397</a> , <a href="#">AT2G47170</a> )
<b>Host</b>	Rabbit
<b>Clonality</b>	Polyclonal
<b>Purity</b>	Serum
<b>Format</b>	Lyophilized
<b>Quantity</b>	50 µl
<b>Reconstitution</b>	For reconstitution add 50 µl of sterile water
<b>Storage</b>	Store lyophilized/reconstituted at -20°C; once reconstituted make aliquots to avoid repeated freeze-thaw cycles. Please remember to spin the tubes briefly prior to opening them to avoid any losses that might occur from material adhering to the cap or sides of the tube.
<b>Additional information</b>	Cellular [compartment marker] of Golgi in immunolocalization and COP1 in western blot

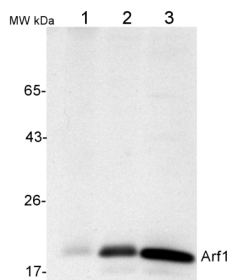
**Application information**

<b>Recommended dilution</b>	1 : 1000 (IF), 1 : 100 (IG), 1 : 1000 (WB)
<b>Expected   apparent MW</b>	21 kDa ( <i>Arabidopsis thaliana</i> )
<b>Confirmed reactivity</b>	<i>Actinidia chinensis</i> , <i>Arabidopsis thaliana</i> , <i>Chlamydomonas reinhardtii</i> , <i>Elaeis sp.</i> , <i>Lilium longiflorum</i> , <i>Medicago truncatula</i> , <i>Nicotiana tabacum</i> , <i>Oryza sativa</i> , <i>Petunia hybrida</i> cv Mitchell, <i>Physcomitrium patens</i> , <i>Solanum tuberosum</i>
<b>Predicted reactivity</b>	<i>Brassica juncea</i> , <i>Brassica napus</i> , <i>Capsella rubella</i> , <i>Capsicum annum</i> , <i>Cucumis sp.</i> , <i>Daucus carota</i> , <i>Elaeis guineensis</i> , <i>Glycine max</i> , <i>Helleborus orientalis</i> , <i>Hordeum vulgare</i> , <i>Medicago truncatula</i> , <i>Nannochloropsis gaditana</i> , <i>Nicotiana benthamina</i> , <i>Ostreococcus tauri</i> , <i>Populus trichocarpa</i> , <i>Triticum aestivum</i> , <i>Zea mays</i>
	Species of your interest not listed? <a href="#">Contact us</a>
<b>Not reactive in</b>	<i>Microsporidia</i> sp.
<b>Additional information</b>	<b>References describing immunolocalization (IF) and (IG) studies:</b>

**Selected references**

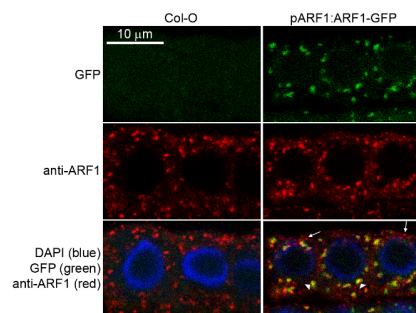
- [Pimpl](#) et al. (2000). In Situ Localization and in Vitro Induction of Plant COPI-Coated Vesicles. *Plant Cell*. 2000 Nov;12(11):2219-36.
- [Ritzenthaler](#) et al. (2002). Reevaluation of the Effects of Brefeldin A on Plant Cells Using Tobacco Bright Yellow 2 Cells Expressing Golgi-Targeted Green Fluorescent Protein and COPI Antisera. *Plant Cell*. 2002 Jan;14(1):237-61.
- [Farago](#) et al. (2022) Small paraquat resistance proteins modulate paraquat and ABA responses and confer drought tolerance to overexpressing *Arabidopsis* plants. *Plant Cell Environ*. 2022 Jul;45(7):1985-2003. doi: 10.1111/pce.14338. Epub 2022 Apr 29. PMID: 35486392; PMCID: PMC9324991.
- [Narasimhan](#) et al. (2021) Systematic analysis of specific and nonspecific auxin effects on endocytosis and trafficking. *Plant Physiol*. 2021 Mar 18:kiab134. doi: 10.1093/plphys/kiab134. Epub ahead of print. PMID: 33734402.
- [Hurny](#) et al. (2020). SYNERGISTIC ON AUXIN AND CYTOKININ 1 Positively Regulates Growth and Attenuates Soil Pathogen Resistance. *Nat Commun*. 2020 May 1;11(1):2170. doi: 10.1038/s41467-020-15895-5. (immunolocalization)
- [Kuang](#) et al. (2019). Quantitative Proteome Analysis Reveals Changes in the Protein Landscape During Grape Berry Development With a Focus on Vacuolar Transport Proteins. *Front Plant Sci*. 2019 May 15;10:641. doi: 10.3389/fpls.2019.00641. eCollection 2019.
- [Singh](#) et al. (2018). A single class of ARF GTPase activated by several pathway-specific ARF-GEFs regulates essential membrane traffic in *Arabidopsis*. *PLoS Genet*. 2018 Nov 15;14(11):e1007795. doi: 10.1371/journal.pgen.1007795.
- [Lang](#) et al. (2011). Simultaneous isolation of pure and intact chloroplasts and mitochondria from moss as the basis for sub-cellular proteomics. *Plant Cell Rep*. 2011 Feb;30(2):205-15. doi: 10.1007/s00299-010-0935-4.

## Application example



**50 µg of total protein** from (1) *Nicotiana tabacum* protoplast total protein, (2) *Arabidopsis thaliana* protoplast soluble protein, (3) *Arabidopsis thaliana* protoplast total protein were separated on **10 % SDS-PAGE** and blotted 2h to **nitrocellulose** (Semi-dry, 200mA). Filters were blocked over night with 5% low-fat **milk powder** in TBS and probed with anti-Arf1 antibodies (AS08 325, **1:1000**, 1h) and secondary anti-rabbit (**1:20000**, 1 h) antibody (HRP) in TBS-Tween (recommended secondary antibody [AS09 602](#)). Signal was detected with chemiluminescence detection reagent and exposure time for this image was 1 minute.

Protoplasts were extracted in 50mM Tris, 10 mM EDTA and Triton X100, 0.02%.



## Immunofluorescence

Specificity testing of rabbit anti-ARF1 serum. Immunofluorescence labelling of rabbit anti-ARF1 antibody (red) in 5-day-old root epidermal cells of the *Arabidopsis thaliana* ecotype Columbia-0 (WT) or seedlings expressing the ADP-RIBOSYLATION FACTOR 1 (AtARFA1c; accession At2g47170) fused to EGFP (green) (Xu, J. and Scheres, B. 2005. Plant Cell 17, 525-536). The rabbit anti-ARF1 antibody was diluted 1:1000 and the secondary antibody, donkey anti-rabbit CY5-coupled (Jackson ImmunoResearch) was diluted 1:300. The nuclei were stained with DAPI (blue). Note the co-labelling of ARF1-GFP with the anti-ARF1 antibody (arrowheads) and the additional labelling (potentially of other ARF1 variants) by the anti-ARF1 antibody (arrows). The antibody staining permeability was limited to the 1-2 outermost layers of the whole-mounted root tips.

Courtesy of Dr. Anna Gustavsson and Dr. Markus Grebe