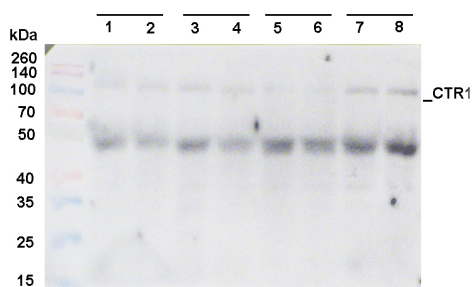


Product no **AS16 3988****CTR1 | Constitutive triple response 1****Product information**

<b>Immunogen</b>	KLH-conjugated peptide derived from <i>Arabidopsis thaliana</i> CTR1 protein sequence, UniProt: <a href="#">Q05609</a> , TAIR: <a href="#">At5g03730</a>
<b>Host</b>	Rabbit
<b>Clonality</b>	Polyclonal
<b>Purity</b>	Antigen affinity purified serum in PBS, pH 7.4
<b>Format</b>	Lyophilized
<b>Quantity</b>	50 µg
<b>Reconstitution</b>	For reconstitution add 50 µl, of sterile water.
<b>Storage</b>	Store lyophilized/reconstituted at -20°C; once reconstituted, make aliquots to avoid repeated freeze-thaw cycles. Please, remember to spin tubes briefly prior to opening them to avoid any losses that might occur from lyophilized material adhering to the cap or sides of the tubes.

**Application information**

<b>Expected   apparent MW</b>	71 kDa
<b>Confirmed reactivity</b>	<i>Arabidopsis thaliana</i>
<b>Not reactive in</b>	<i>Solanaceae</i> sp.
<b>Additional information</b>	This antibody is recognizing YFP-tagged CTR1.
<b>Selected references</b>	To be added when available. Antibody released in February 2023.

**Samples:**

- 1 – 35 µg of *Arabidopsis thaliana* Col-0 (wild type) control whole leaf extract
  - 2 – 35 µg of *Arabidopsis thaliana* Col-0 (wild type) treated with 12% PEG whole leaf extract
  - 3 – 35 µg of *Arabidopsis thaliana* etr1-1 mutant control whole leaf extract
  - 4 – 35 µg of *Arabidopsis thaliana* etr1-1 mutant treated with 12% PEG whole leaf extract
  - 5 – 35 µg of *Arabidopsis thaliana* ctr1-1 mutant control whole leaf extract
  - 6 – 35 µg of *Arabidopsis thaliana* ctr1-1 mutant treated with 12% PEG whole leaf extract
  - 7 – 35 µg of *Arabidopsis thaliana* 35S:NMig1 (overexpressing At5g58740) control whole leaf extract
  - 8 – 35 µg of *Arabidopsis thaliana* 5S:NMig1 (overexpressing At5g58740) treated with 12% PEG whole leaf extract
- MW marker: Spectra™ Multicolor Broad Range from Thermo Scientific

30 µg/well of total protein was extracted from frozen leaves with 100 mM Tris-HCl buffer pH 7.6 (containing 12.5% Glycerol, 20 mM -mercapthoethanol, 2 mM PMSF) and denatured with Sample Buffer at 70°C for 5 min. The proteins were separated on 10 % SDS-PAGE and blotted 1.5 h to nitrocellulose membrane (pore size of 0.45 µm), using wet transfer. Blot was blocked with 5 % milk for 2h/RT with agitation. Blot was incubated in the primary antibody at a dilution of 1: 1 000 in TBS-T containing 2% milk ON/4°C with agitation. The antibody solution was decanted and the blot was rinsed briefly twice; then washed once for 15 min and 3 times for 5 min in TBS-T at RT with agitation. Blot was incubated in Agrisera matching secondary antibody (anti-rabbit IgG horse radish peroxidase conjugated, [AS09 602](#)) diluted to 1:25 000 in TBS-T for 1.5 h/RT with agitation. The blot was washed as above and developed for 5 min with Agrisera ECLBright ([AS16 ECL-N-10](#)). Exposure time was 10 seconds.

# Agrisera

Part of Olink® Group 

This product is **for research use only** (not for diagnostic or therapeutic use)

contact: [support@agrisera.com](mailto:support@agrisera.com)

Agrisera AB | Box 57 | SE-91121 Vännäs | Sweden | +46 (0)935 33 000 | [www.agrisera.com](http://www.agrisera.com)

Courtesy of Dr. Irina Vaseva, Laboratory 'Regulation of Gene Expression', Institute of Plant Physiology and Genetics, Bulgarian Academy of Sciences, Sofia, Bulgaria