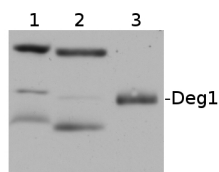


Product no **AS07 246****Deg1 | chloroplastic DegP-type serine protease 1****Product information**

Immunogen	Recombinant Deg1 of <i>Arabidopsis thaliana</i> O22609 , At3g27925 , overexpressed in <i>E.coli</i>
Host	Rabbit
Clonality	Polyclonal
Purity	Total IgG. Protein G purified in PBS pH 7.4.
Format	Lyophilized
Quantity	360 µg
Reconstitution	For reconstitution add 200 µl of sterile water
Storage	Store lyophilized/reconstituted at -20°C; once reconstituted make aliquots to avoid repeated freeze-thaw cycles. Please remember to spin the tubes briefly prior to opening them to avoid any losses that might occur from material adhering to the cap or sides of the tube.

Application information

Recommended dilution	1 : 500/5 ug thylakoid fraction (WB)
Expected apparent MW	46,6 36 kDa
Confirmed reactivity	<i>Arabidopsis thaliana</i> , <i>Pisum sativum</i> , <i>Zea mays</i>
Predicted reactivity	<i>Ricinus communis</i> Species of your interest not listed? Contact us
Not reactive in	No confirmed exceptions from predicted reactivity are currently known
Additional information	Unspecific reaction at ca, 30 kDa and ca, 85 kDa (checked by mass spec, and confirmed not to be neither Deg1 nor any other protease, The band at the right MW does contain Deg1 by our MS analysis)
Selected references	Zienkiewicz et al. (2013) . Light intensity and quality stimulated Deg1-dependent cleavage of PSII components in the chloroplasts of maize. <i>Plant Physiol. & Biochem.</i> March 16.

Application example

(1) *Pisum sativum* thylakoid fraction, (2) *Arabidopsis thaliana* thylakoid fraction, (3) recombinant Deg1 expressed in *E.coli*. Primary antibody has been used at 1 : 500 dilution with chemiluminescent detection reagent.