

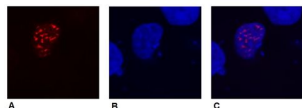
Product no **AS21 4619****DYKDDDDK (binds to Sigma FLAG®) (mouse monoclonal) (clone F-tag-01)**

Product information

Immunogen	KLH-conjugated synthetic peptide: DYKDDDDK (Sigma FLAG®)
Host	Mouse
Clonality	Monoclonal
Subclass/isotype	IgG1
Purity	Immunoglobulin purified on Protein A in PBS pH 7.4. Contains 15 mM sodium azide.
Format	Liquid at 1 mg/ml.
Quantity	0.1 mg
Storage	Store at 2-8°C. Do not freeze. Do not use after expiration date stamped on the label. Please remember to spin the tubes briefly prior to opening them to avoid any losses that might occur from material adhering to the cap or sides of the tube.
Additional information	This antibody recognizes DYKDDDDK (Sigma FLAG®) tagged proteins

Application information

Recommended dilution	1 µg/ml (WB)
Confirmed reactivity	DYKDDDDK (Sigma FLAG®) epitope tag
Selected references	To be added when available, antibody released in October 2021.



COS-7 cells transfected with expression constructs encoding fusion nuclear protein with DYKDDDDK (binds to Sigma FLAG®).

A - fusion nuclear protein (red) stained with anti-DYKDDDDK (binds to Sigma FLAG® monoclonal antibodies at 1 µg/ml, secondary antibody goat anti-mouse IgG1 Alexa Fluor® 594

B - cell nuclei stained with DAPI (blue)

C - merged figures - confirmation of nuclear localization of the fusion protein; cell nuclei stained with DAPI (blue)