

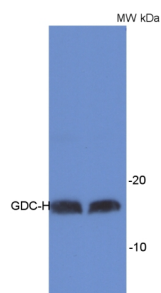
Product no **AS05 074****GDC-H | H protein of glycine decarboxylase complex (GDC)****Product information**

Immunogen	purified GDC-H protein from <i>Spinacia oleracea</i>
Host	Rabbit
Clonality	Polyclonal
Purity	Total IgG. Protein G purified in PBS pH 7.4.
Format	Lyophilized
Quantity	200 µg
Reconstitution	For reconstitution add 200 µl of sterile water
Storage	Store lyophilized/reconstituted at -20°C; once reconstituted make aliquots to avoid repeated freeze-thaw cycles. Please remember to spin the tubes briefly prior to opening them to avoid any losses that might occur from material adhering to the cap or sides of the tube.
Additional information	Cellular [compartment marker] of mitochondrial matrix

Application information

Recommended dilution	1 : 5 000 (TP), (WB)
Expected apparent MW	16 kDa
Confirmed reactivity	<i>Arabidopsis thaliana</i> , <i>Cyanthobasis fruticulosa</i> , <i>Petrosimonia nigdeensis</i> , <i>Petunia hybrida</i> cv. Mitchell, <i>Portulaca grandiflora</i> , <i>Salsola grandis</i> , <i>Salsola tragus</i> , <i>Spinacia oleracea</i> , <i>Triticum aestivum</i> , <i>Vicia faba</i>
Predicted reactivity	higher plants
Not reactive in	No confirmed exceptions from predicted reactivity are currently known
Additional information	This antibody can be used on total cell extract of <i>Arabidopsis thaliana</i> .
Selected references	<p>Skalický et al. (2023). Fluorescence-activated multi-organelle mapping of subcellular plant hormone distribution. <i>Plant J.</i> 2023 Dec;116(6):1825-1841. doi: 10.1111/tpj.16456. Epub 2023 Sep 8.</p> <p>Xi et al.(2023). High CO2 facilitates fatty acid biosynthesis and mitigates cellular oxidative stress caused by CAC2 dysfunction in <i>Arabidopsis</i>. <i>Plant J.</i> 2023 Sep;115(5):1316-1330. doi: 10.1111/tpj.16321. Epub 2023 Jun 15.</p> <p>Schäfer et al. (2021) Assessment of Mitochondrial Protein Topology and Membrane Insertion. <i>Methods Mol Biol.</i> 2022;2363:165-181. doi: 10.1007/978-1-0716-1653-6_13. PMID: 34545493.</p> <p>Przybyla-Toscano et al. (2021) Protein lipoylation in mitochondria requires Fe-S cluster assembly factors NFU4 and NFU5. <i>Plant Physiol.</i> 2021 Oct 28;kiab501. doi: 10.1093/plphys/kiab501. Epub ahead of print. PMID: 34718778.</p> <p>Guralnick et al. (2020). The Development of Crassulacean Acid Metabolism (CAM) Photosynthesis in Cotyledons of the C4 Species, <i>Portulaca grandiflora</i> (Portulacaceae). <i>Plants (Basel)</i>. 2020 Jan 2;9(1). pii: E55. doi: 10.3390/plants9010055. (tissue printing)</p> <p>Réthoré et al. (2019). <i>Arabidopsis</i> seedlings display a remarkable resilience under severe mineral starvation using their metabolic plasticity to remain self-sufficient for weeks. <i>Plant J.</i> 2019 Mar 22. doi: 10.1111/tpj.14325.</p> <p>Lynch et al. (2017). Multifaceted plant responses to circumvent Phe hyperaccumulation by downregulation of flux through the shikimate pathway and by vacuolar Phe sequestration. <i>Plant J.</i> 2017 Dec;92(5):939-950. doi: 10.1111/tpj.13730. (<i>Petunia hybrida</i> cv. Mitchell)</p>

Application example



15 µg of total protein from *Arabidopsis thaliana* leaf extract has been loaded per lane. Primary antibody has been used in 1: 5000 dilution using chemiluminescent detection.

Courtesy of Dr Olivier Keech, UPSC, Umeå, Sweden