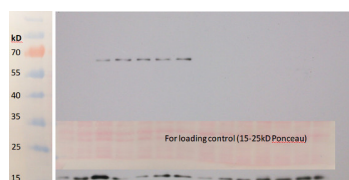


Product no **AS15 2882****GPXh | Glutathione peroxidase (algal)****Product information**

|                       |   |
|-----------------------|---|
| <b>Immunogen</b>      | KLH-conjugated synthetic peptide derived from glutathione peroxidase protein sequence from <i>Chlamydomonas reinhardtii</i> , UniProt: <a href="#">O22448</a>   |
| <b>Host</b>           | Rabbit  |
| <b>Clonality</b>      | Polyclonal  |
| <b>Purity</b>         | Immunogen affinity purified serum in PBS pH 7.4.  |
| <b>Format</b>         | Lyophilized   |
| <b>Quantity</b>       | 50 µg   |
| <b>Reconstitution</b> | For reconstitution add 50 µl of sterile water   |
| <b>Storage</b>        | Store lyophilized/reconstituted at -20°C; once reconstituted make aliquots to avoid repeated freeze-thaw cycles. Please remember to spin the tubes briefly prior to opening them to avoid any losses that might occur from material adhering to the cap or sides of the tube. |

**Application information**

|                               |  |
|-------------------------------|--|
| <b>Recommended dilution</b>   | 1 : 5000 (WB)  |
| <b>Expected   apparent MW</b> | 18   15 kDa  |
| <b>Confirmed reactivity</b>   | <i>Chlamydomonas reinhardtii</i>   |
| <b>Predicted reactivity</b>   | <i>Volvox carteri</i><br>Species of your interest not listed? <a href="#">Contact us</a> |

**application example**

10 µg of a total protein from *Chlamydomonas reinhardtii* extracted with 2 % SDS/50 mM TRIS pH 6.8 + protease inhibitor cocktail were separated on 12 % SDS-PAGE and blotted for 1 h to PVDF using semi-dry transfer. Blots were blocked with 5 % low-fat milk powder TBS + 0.1 % Tween for 1h at room temperature (RT) with agitation. Blot was incubated in the primary antibody at a dilution of 1: 5 000 for 1 h at RT with agitation. The antibody solution was decanted and the blot was rinsed, then washed 3 times each for 5 min in TBS-T at RT with agitation. Blot was incubated in secondary antibody (anti-rabbit IgG horse radish peroxidase conjugated) diluted to 1:25 000 in 2 % low-fat milk powder TBS + 0.1 % Tween for 1h at RT with agitation. The blot was washed as above and developed for 30 s with chemiluminescent detection reagent according to the manufacturer's instructions. Exposure time was typically 30 seconds.

Courtesy Dr. Thomas Roach, University of Innsbruck, Austria