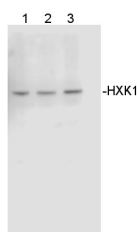


Product no **AS16 4083****HXK1 | Hexokinase 1 (Chlamydomonas)****Product information**

Immunogen	KLH-conjugated synthetic peptide derived from <i>Chlamydomonas reinhardtii</i> hexokinase-1, UniProt: A8JGU7
Host	Rabbit
Clonality	Polyclonal
Purity	Serum
Format	Lyophilized
Quantity	50 µl
Reconstitution	For reconstitution add 50 µl of sterile water
Storage	Store lyophilized/reconstituted at -20°C; once reconstituted make aliquots to avoid repeated freeze-thaw cycles. Please remember to spin the tubes briefly prior to opening them to avoid any losses that might occur from material adhering to the cap or sides of the tube.

Application information

Recommended dilution	1 : 1000 (WB)
Expected apparent MW	67,3 kDa
Confirmed reactivity	<i>Chlamydomonas reinhardtii</i> , <i>Eudorina elegans</i> , <i>Gonium pectorale</i>
Predicted reactivity	Species of your interest not listed? Contact us
Selected references	Upadhyaya and Jagadeeshwar Rao (2019). Reciprocal regulation of photosynthesis and mitochondrial respiration by TOR kinase in <i>Chlamydomonas reinhardtii</i> . Plant Direct Volume 3, Issue 11.

Application example

Total protein of *Chlamydomonas reinhardtii* strain 21gr (1), strain cw15 (2), strain M10 (3) was extracted using 1x Laemmli buffer + DTT + protease and phosphatase inhibitors without bromophenol blue heated at 95°C for ten minutes then vortexed with zirconia beads at max speed for ten minutes. Lysate was spun at 4°C for ten minutes at max speed in a tabletop centrifuge. Proteins were precipitated out of supernatant in 80% acetone at -20°C for 20 min, spun at 4°C at max speed for 10 min. Pellet was washed 1x with 80% acetone and resuspended in 1x LDS sample buffer + DTT + inhibitors at a concentration of 1 µg chlorophyll/µL. Protein equivalent to 1 of chlorophyll was loaded on a 4-20% Bis-Tris gel and blotted to PVDF using wet transfer methods. Blot was blocked with 10% milk in TBS-T for 1hr/RT. Blot was incubated in the primary antibody at a dilution of 1:1000 in 5% milk in TBS-T ON/4°C. The antibody solution was decanted and the blot was rinsed 3 times for 5 min in TBS-T at RT with agitation. Blot was incubated in Agrisera matching secondary diluted to 1:50 000 ([ASQ9 602](#)) in 5% milk in TBS-T for 1hr/RT with agitation. The blot was washed as above and developed with chemiluminescent detection reagent and imaged on a Licor C-Digit blot scanner. Exposure time was 12 min.

Courtesy of Jessica Rakijas, Kansas State University, USA