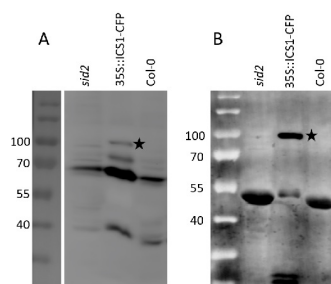


Product no **AS16 4107****ICS1 | Isochorismate synthase 1, chloroplastic****Product information**

<b>Immunogen</b>	KLH-conjugated synthetic peptide derived from <i>Arabidopsis thaliana</i> ICS1 protein sequence, UniProt: <a href="#">Q9S7H8</a> , TAIR: <a href="#">At1g74710</a> . The peptide is perfectly conserved in <a href="#">ICS1-1</a> and <a href="#">ICS1-2</a> isoforms of <i>Arabidopsis thaliana</i> .
<b>Host</b>	Rabbit
<b>Clonality</b>	Polyclonal
<b>Purity</b>	Immunogen affinity purified serum in PBS pH 7.4.
<b>Format</b>	Lyophilized
<b>Quantity</b>	50 µg
<b>Reconstitution</b>	For reconstitution add 50 µl of sterile water
<b>Storage</b>	Store lyophilized/reconstituted at -20°C; once reconstituted make aliquots to avoid repeated freeze-thaw cycles. Please remember to spin the tubes briefly prior to opening them to avoid any losses that might occur from material adhering to the cap or sides of the tube.

**Application information**

<b>Recommended dilution</b>	1 : 1000 (WB)
<b>Expected   apparent MW</b>	62   55 kDa
<b>Confirmed reactivity</b>	<i>Arabidopsis thaliana</i> (recombinant ICS1)
<b>Predicted reactivity</b>	<a href="#">please inquire</a>
<b>Not reactive in</b>	<i>Solanum lycopersicum</i> , <i>Symbiodinium sp.</i> , <i>Zea mays</i>
<b>Additional information</b>	ICS1 is present in too low levels to allow detection in control conditions. Antibody is recognizing ICS1 in transgenic lines which have ICS1 under 35S promotor and is recognizing well YFP-tagged ICS1.
<b>Selected references</b>	To be added when available, antibody released in January 2021



Asterisks indicate ICS1-CFP protein extracted from frozen and ground leaf material of *Arabidopsis thaliana* adult plants, detected by anti ICS1 antibody (A) and anti-GFP antibody (B). Extraction protocol: total protein was extracted with buffer containing 25mM Tris-HCl pH 8.0, 10mM MgCl<sub>2</sub>, 1mM DTT, 75 mM NaCl, 0.1% Tween 20, and 20 mM PMSF. 100 µg of protein extract have been loaded in each well of a 10 % SDS-PAGE and blotted for 2h onto PVDF membrane using the wet-blotting technique. Blocking: 2% non-fat milk Primary antibodies: overnight incubation at 4°C with A) anti-ICS1 rabbit polyclonal (Agrisera); dilution 1:1000 and B) anti-GFP mouse monoclonal (Thermo Fisher); dilution 1:5000 Secondary antibodies: 1h incubation with A) goat anti rabbit HRP-conjugated ([AS09 602](#), Agrisera); dilution 1:25 000 at RT, and B) anti-mouse 800CW (Odyssey); dilution 1:20 000 at RT.

Courtesy of Mr. Saad Bin Eusuf and Dr. Julia Krasensky-Wrzaczek; University of Helsinki, Finland