

Product no **AS20 4372****S glycoprotein | SARS-CoV-2 Spike Glycoprotein (polyclonal)****Product information**

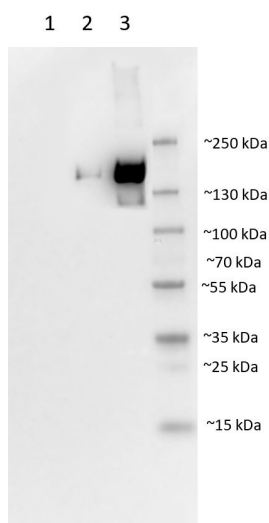
<b>Immunogen</b>	KLH-conjugated peptide derived from UniProt: <a href="#">P0DTC2</a> .
<b>Host</b>	Rabbit
<b>Clonality</b>	Polyclonal
<b>Purity</b>	Immunogen affinity purified serum in PBS pH 7.4.
<b>Format</b>	Lyophilized
<b>Quantity</b>	50 µg
<b>Reconstitution</b>	For reconstitution add 50 µl, of sterile water
<b>Storage</b>	Store lyophilized/reconstituted at -20°C; once reconstituted make aliquots to avoid repeated freeze-thaw cycles. Please remember to spin the tubes briefly prior to opening them to avoid any losses that might occur from material adhering to the cap or sides of the tube.

**Application information**

<b>Recommended dilution</b>	1 : 1000 (WB)
<b>Expected   apparent MW</b>	141 kDa
<b>Confirmed reactivity</b>	SARS-CoV-2 Spike Glycoprotein
<b>Not reactive in</b>	No confirmed exceptions from predicted reactivity are currently known

**application example**

1 – 0.1 ng SARS-CoV-2 SPIKE glycoprotein.  
 2 – 1 ng SARS-CoV-2 SPIKE glycoprotein.  
 3 - 10 ng SARS-CoV-2 SPIKE glycoprotein.  
 MW Standard: PageRuler™ Plus Prestained Protein Ladder #26619



SARS-CoV-2 SPIKE glycoprotein samples were diluted in loading buffer to concentrations of 1 ng/µl, 0.1 ng/µl and 0.01 ng/µl and further denatured by boiling at 95°C for 5 min. Proteins were separated on 12% SDS-PAGE and blotted 1h to nitrocellulose (pore size of 0.45 µm), using semi-dry transfer. Blot was blocked with 2% milk in 4°C/ON with agitation. Blot was incubated in the primary antibody at a dilution of 1: 1 000 for 1h/RT with agitation in TBS-T. The antibody solution was decanted and the blot was rinsed briefly twice, then washed once for 15 min and 3 times for 5 min in TBS-T at RT with agitation. Blot was incubated in Agrisera matching secondary antibody ([AS09 602](#), Goat anti-rabbit IgG horse radish peroxidase conjugated) diluted to 1:25 000 in for 1h/RT with agitation. The blot was washed as above and developed for 4 min with Agrisera ECLBright ([AS16 ECL-N](#)). Exposure time was 20 seconds.