

Product no **AS09 569****Soy protein****Product information**

Immunogen	Glycine max flour protein extract
Host	Chicken
Clonality	Polyclonal
Purity	Immunogen affinity purified IgY in PBS pH 7.2. Contains 0.075 % sodium azide.
Format	Liquid
Quantity	100 µg
Storage	Store at -20 °C; make aliquots to avoid working with a stock. Please remember to spin the tubes briefly prior to opening them to avoid any losses that might occur from material adhering to the cap or sides of the tube.

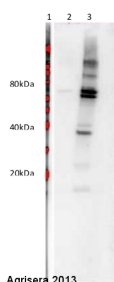
Additional information | Antibodies were purified on immobilized soybean proteins

Application information

Recommended dilution | 2- 5 µl/ml (capture ELISA), 0,1-1 µl/ml (WB)

Confirmed reactivity | *Glycine max* proteins

Predicted reactivity | Soybean proteins



Total soy protein 1 µg (lane 2) and 5 µg (lane 3) were loaded on NuPage gel (Invitrogen) and transferred to the PVDF membrane. Filters were blocked 1h with 2% low-fat milk powder in TBS-T (0.1% TWEEN 20) and probed with anti-soy protein antibody (AS09 569, 1:10 000, 0.5 µl/5ml, 1h) and secondary anti-chicken (1:25 000, 1 h) antibody (HRP conjugated, secondary antibody [AS09_602](#)) in TBS-T containing 2% low fat milk powder. Antibody incubations were followed by washings in TBS-T (15, +5, +5, +5 min). All steps were performed at RT with agitation. Signal was detected with chemiluminescent detection reagent using a Fuji LAS-3000 CCD (300s, standard sensitivity). Exposure time was 2 min.

Reactivity of this antibody to egg or milk proteins was not analysed.